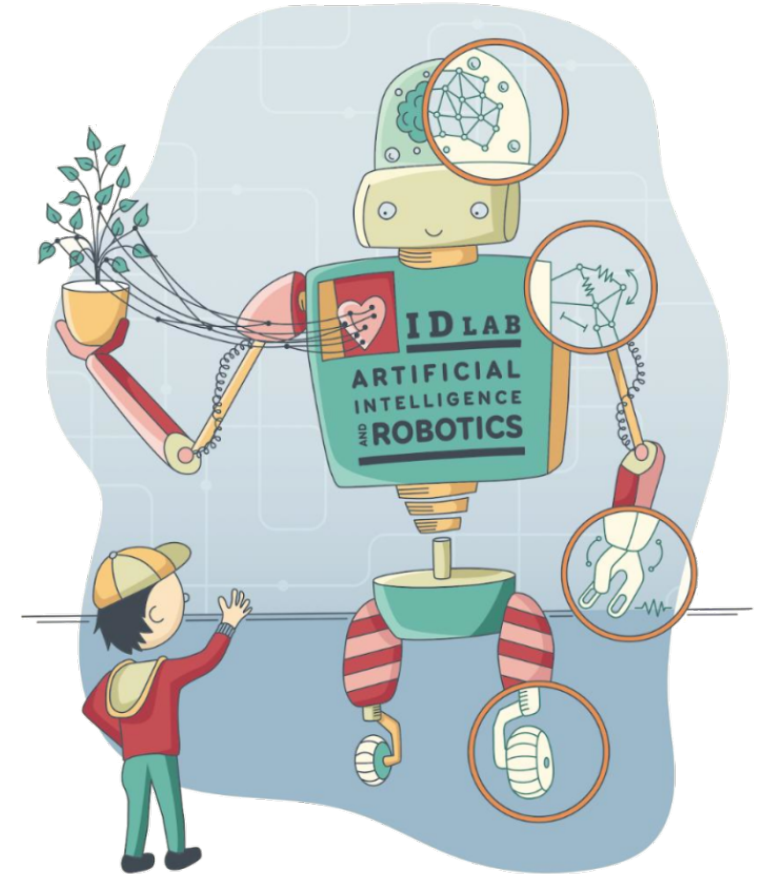


What's that sign?

Mathieu De Coster

IDLab Ghent, AI and Robotics lab



46%

of the Belgian population is **digitally vulnerable**

What's that sign?

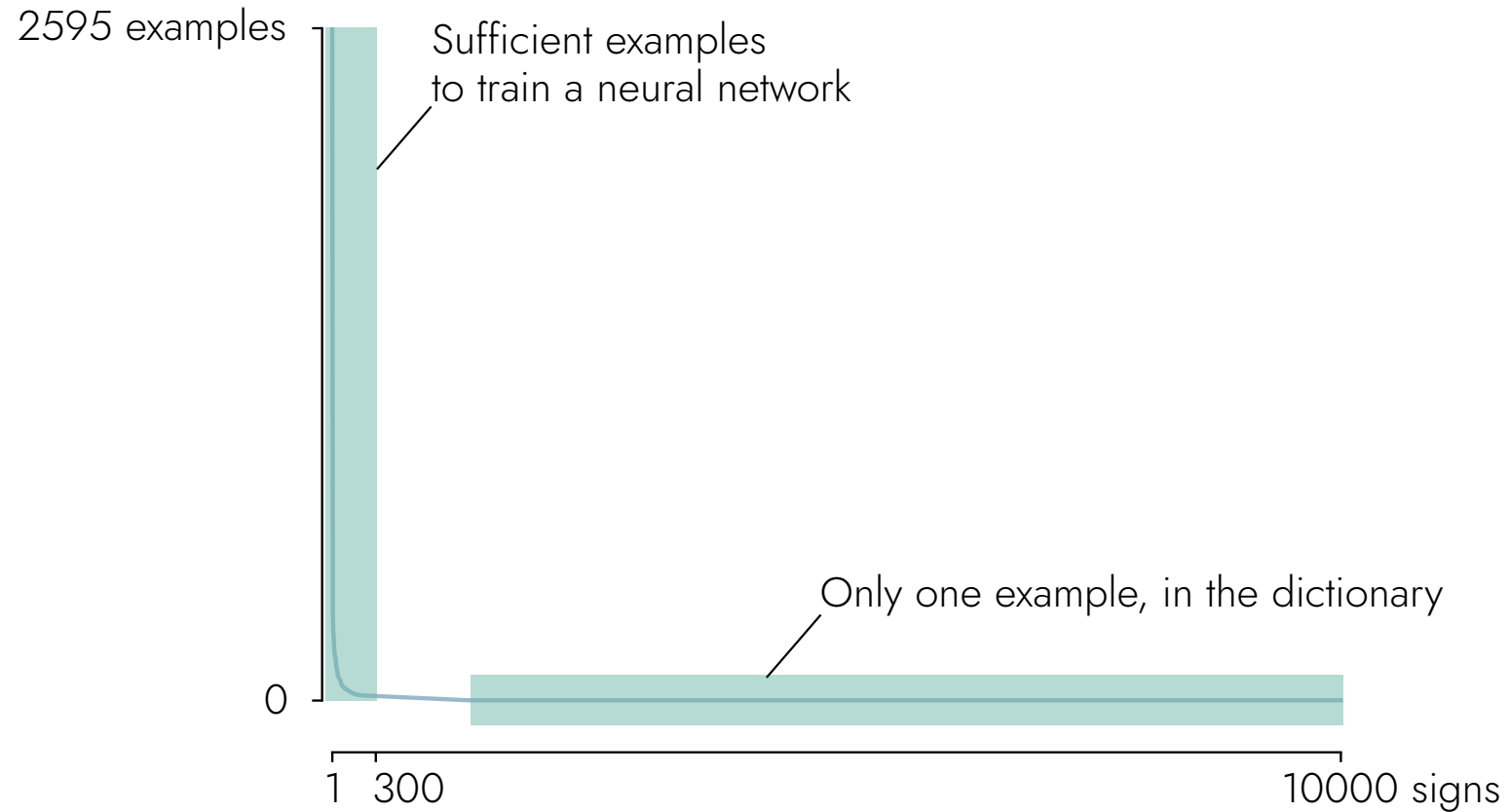
The web is not accessible
in sign language form

We need to classify unknown signs

We need a robust deep learning system

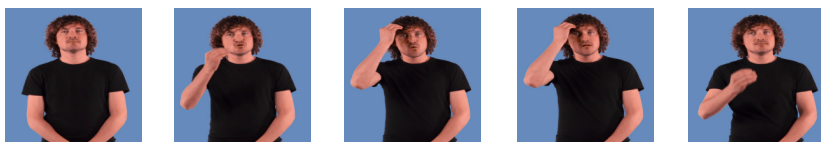
We made an initial prototype

One shot sign language recognition classifies unknown signs

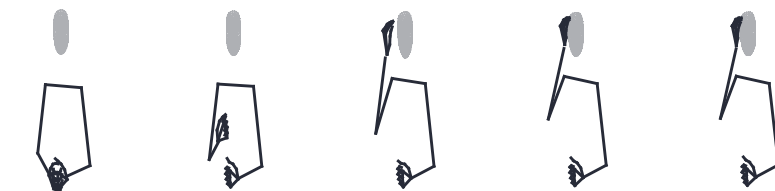


Human keypoint estimation and self-attention enable one shot sign language recognition

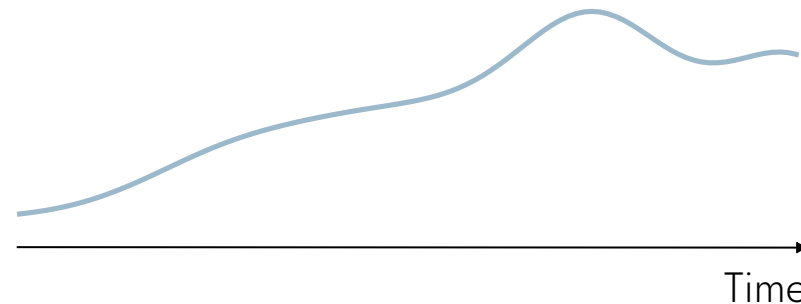
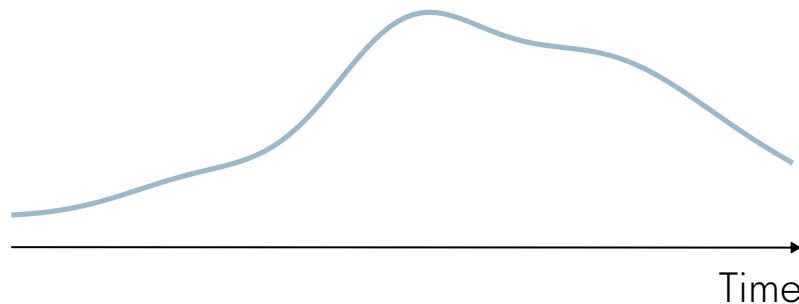
Video frames



Keypoints



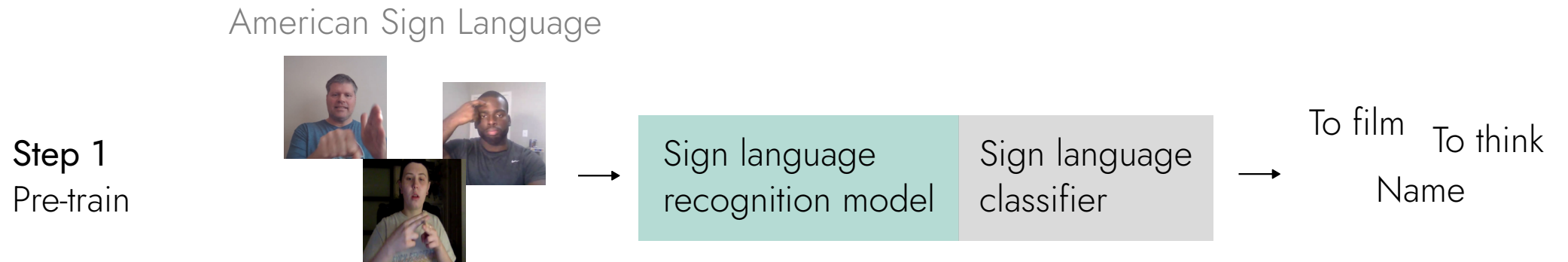
Attention



"School"

"To remember"

Queries are classified by finding the nearest neighbour in an embedding space

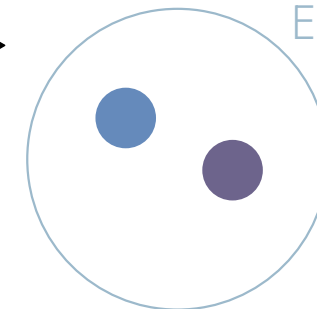
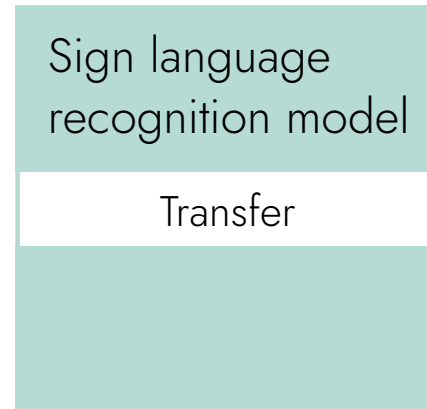
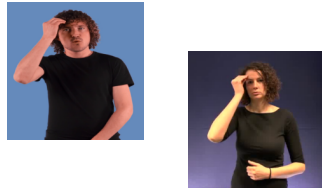


Queries are classified by finding the nearest neighbour in an embedding space

Step 1
Pre-train

Step 2
Embed

Flemish Sign Language



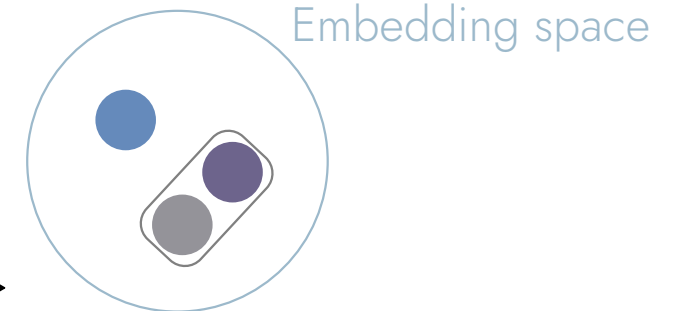
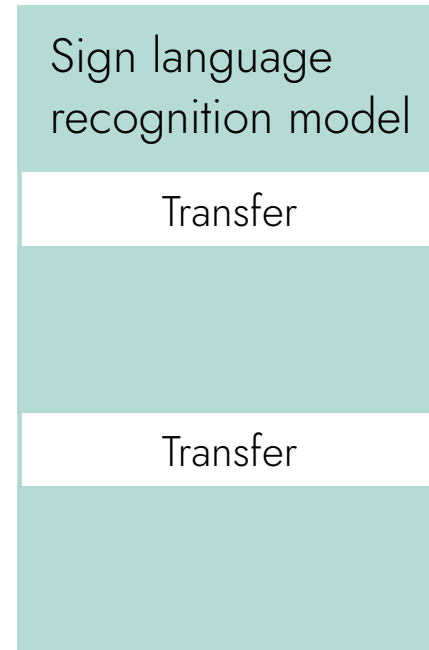
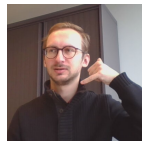
Embedding space

Queries are classified by finding the nearest neighbour in an embedding space

Step 1
Pre-train

Step 2
Embed

Step 3
Query



The reciprocal rank (RR) indicates how accurate the search is

Correct result

Wrong result

Wrong result

Wrong result

Rank = 1

RR = 1

Wrong result

Correct result

Wrong result

Wrong result

Rank = 2

RR = 0.5

Wrong result

Wrong result

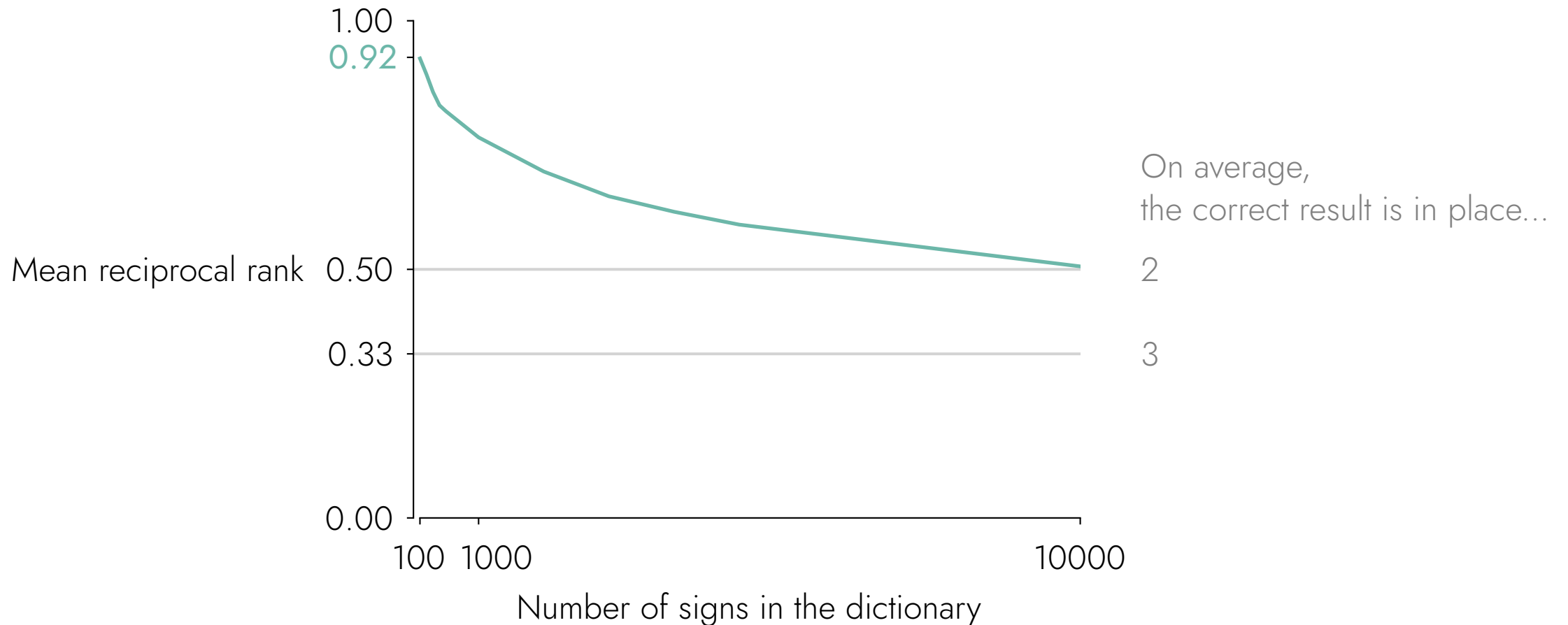
Wrong result

Correct result

Rank = 4

RR = 0.25

Our prototype can recognise unknown signs with remarkable accuracy



One shot sign language recognition
classifies unknown signs

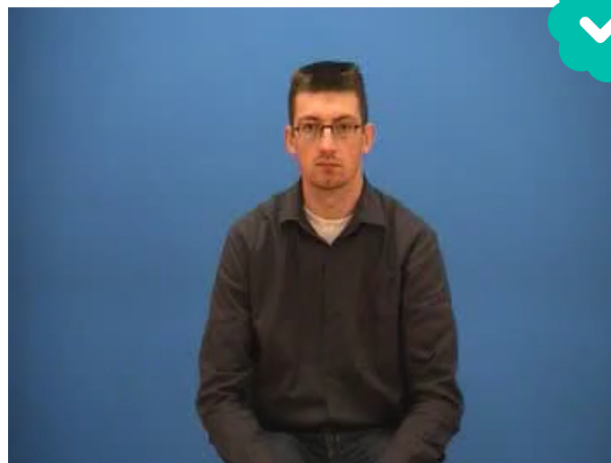
Human keypoint estimation and self-attention
enable one shot sign language recognition

Our prototype can recognise unknown signs
with remarkable accuracy

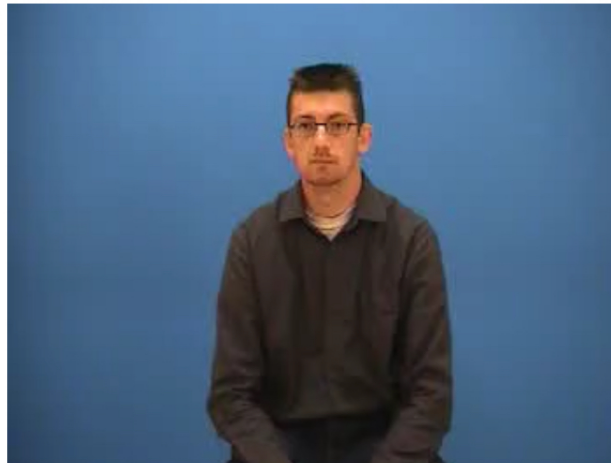
✓ Stap 4. Klaar!

✓ Gelukt. SignBuddy heeft het juiste gebaar gevonden in het woordenboek

Hieronder zie je de 6 gebaren die er volgens SignBuddy het meest op lijken:



bleek



asfaltweg



achter

